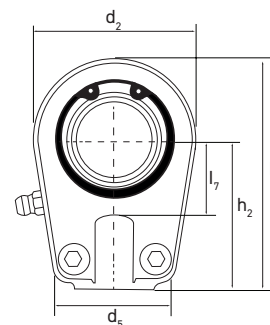
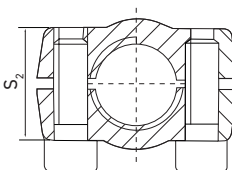
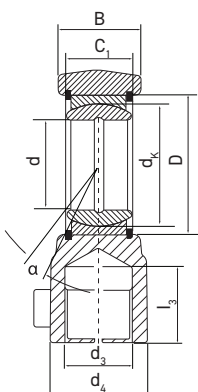


COMPONENTES PARA CILINDROS
SIR | RÓTULA DE ROSCAR



CÓD.	Dimensões em mm															Graus $\approx \alpha$	Carga		Peso Kg
	d	d ₁	d ₂	d ₃	d ₄	d ₅	d _k	B	C ₁	D	h ₂	l ₃	l ₄	l ₇	S ₂		C	C ₀	
SIR 20 ES/HM	20	24.1	56	M16x1.5	25	46	29	19	16	35	50	17	80	25	17	9	30	81.1	0.45
SIR 25 ES/HM	25	29.3	56	M16x1.5	25	46	35.5	23	20	42	50	17	80	28	21	7	48	72	0.49
SIR 30 ES/HM	30	34,2	64	M22x1.5	32	50	40.7	28	22	47	60	23	94	30	26	6	62	106	0.76
SIR 35 ES/HM	35	39.7	78	M28x1.5	40	66	47	30	25	55	70	29	112	38	28	6	80	153	1.26
SIR 40 ES/HM	40	45.0	94	M35x1.5	49	76	53	35	28	62	85	36	135	45	33	7	100	250	2.15
SIR 50 ES/HM	50	56.0	116	M45x1.5	61	90	60	40	35	68	105	46	168	55	37	6	156	365	3.8
SIR 60 ES/HM	60	66.8	130	M58x1.5	75	120	66	50	44	75	130	59	200	65	46	6	245	400	6.20
SIR 60 ES/HM	70	77.8	154	M65x1.5	86	130	80	55	49	90	150	66	232	75	51	6	315	540	9.83
SIR 80 ES/HM	80	89.4	176	M80x2.0	105	160	92	60	55	105	170	81	265	80	55	6	400	670	13.97
SIR 90 ES/HM	90	98.1	206	M100x2.0	124	180	105	65	60	120	210	101	322	90	60	5	490	980	23.50
SIR 100 ES/ HM	100	109.5	231	M110x2	138	200	115	70	70	130	235	111	360	105	65	7	610	1.120	32.00
SIR 110 ES/ HM	110	121.2	266	M120x3	152	220	130	80	70	150	265	125	407	115	74	6	655	1.700	41.00
SIR 120 ES/ HM	120	135.5	340	M130x3	172	257	160	90	85	180	310	135	490	140	84	6	950	2.900	72.00

C - Carga dinâmica
C₀ - Carga estática